



GODAVARI FOUNDATION'S

DR. ULHAS PATIL MEDICAL COLLEGE & HOSPITAL

Recognized by National Medical Commission, Approved by Central Govt. of India, New Delhi,

Letter no. MCI-34(41)/2012-med./158127, dated 05/02/2013

Affiliated to Maharashtra University of Health Sciences, Nashik [College Code-1306]

Jalgaon-Bhusawal Road, Jalgaon Kh, Tal. & Dist. Jalgaon 425309 Tel. No.(0257)2366657, 2366678

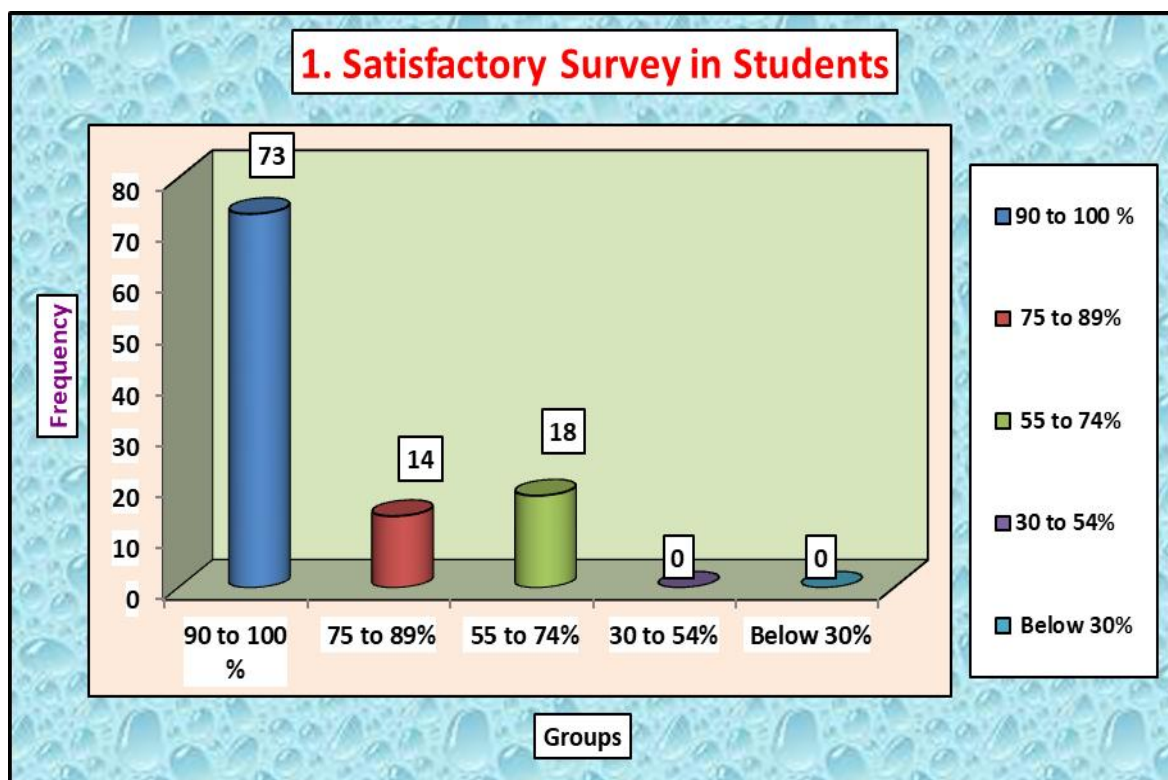
Email ID : dupmcj@yahoo.in, dupmcj@gmail.com Website : www.dupmc.ac.in

NAAC ACCREDITED

Student's Satisfaction Survey Report (2024-25)

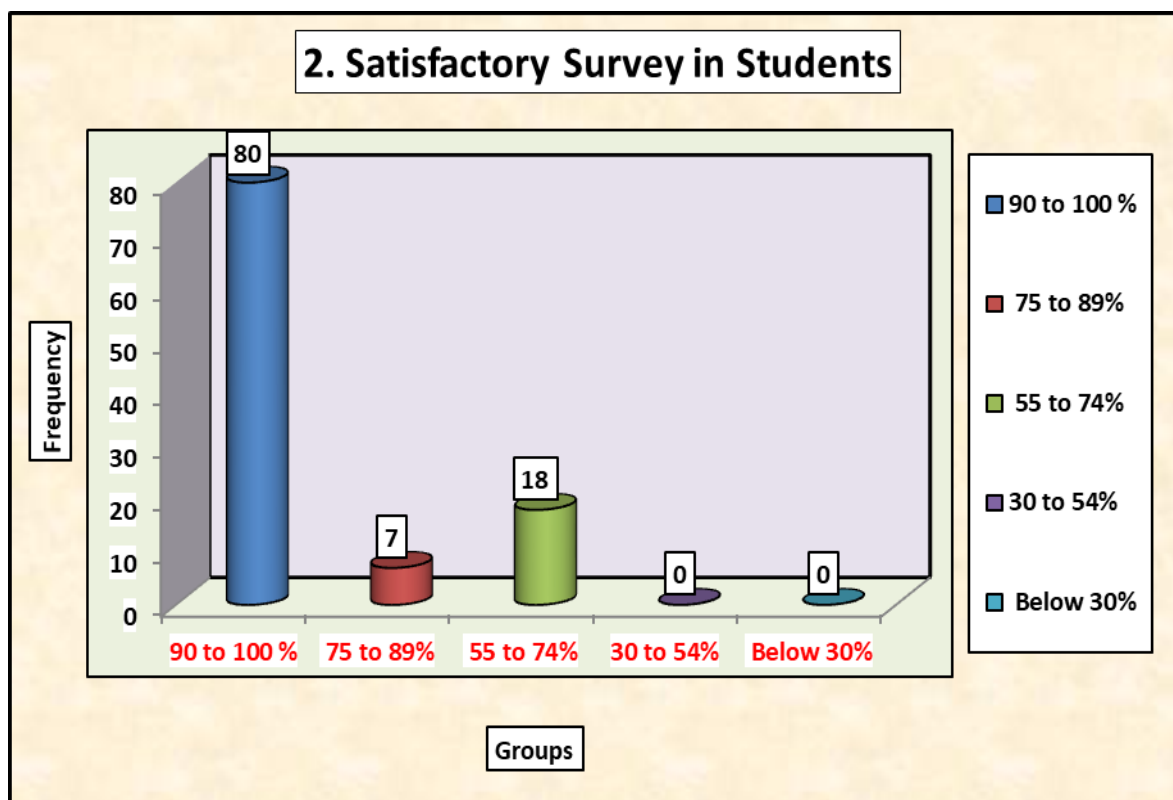
Student's Satisfaction Survey was conducted and results were Analysed, A total of 105 students across all the professional years of MBBS program at the end of the pre-final practical exams of 2024-25.

Que No.	Question	Groups	Frequency	Percentage
1	How much of the Syllabus was covered in the Class in which you are studying?	90 to 100 %	73	69.52
		75 to 89%	14	13.33
		55 to 74%	18	17.14
		30 to 54%	0	0.00
		Below 30%	0	0.00



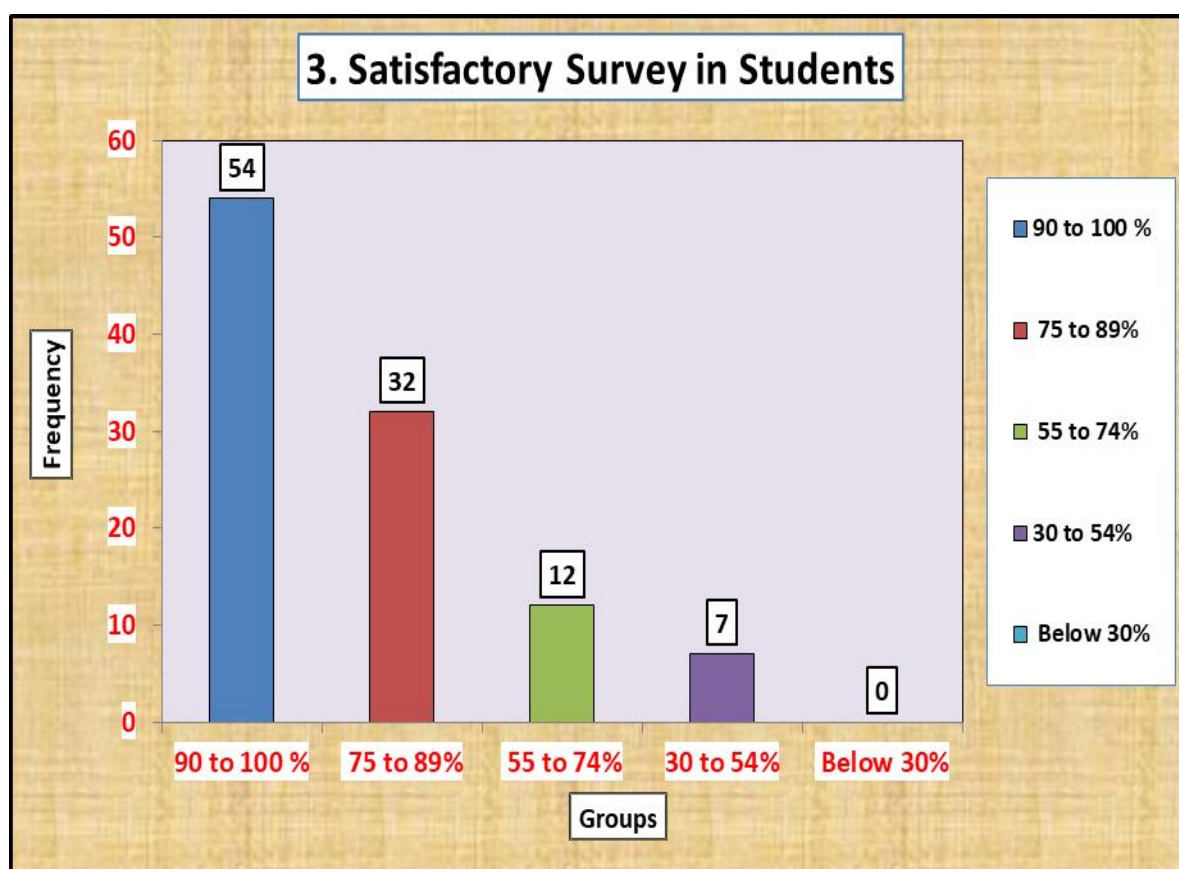


Que No.	Question	Groups	Frequency	Percentage
2	What percentage of teachers are effectively communicating Knowledge, Soft skills and Practical Aspects in Teaching Learning process?	90 to 100 %	80	76.19
		75 to 89%	7	6.67
		55 to 74%	18	17.14
		30 to 54%	0	0.00
		Below 30%	0	0.00



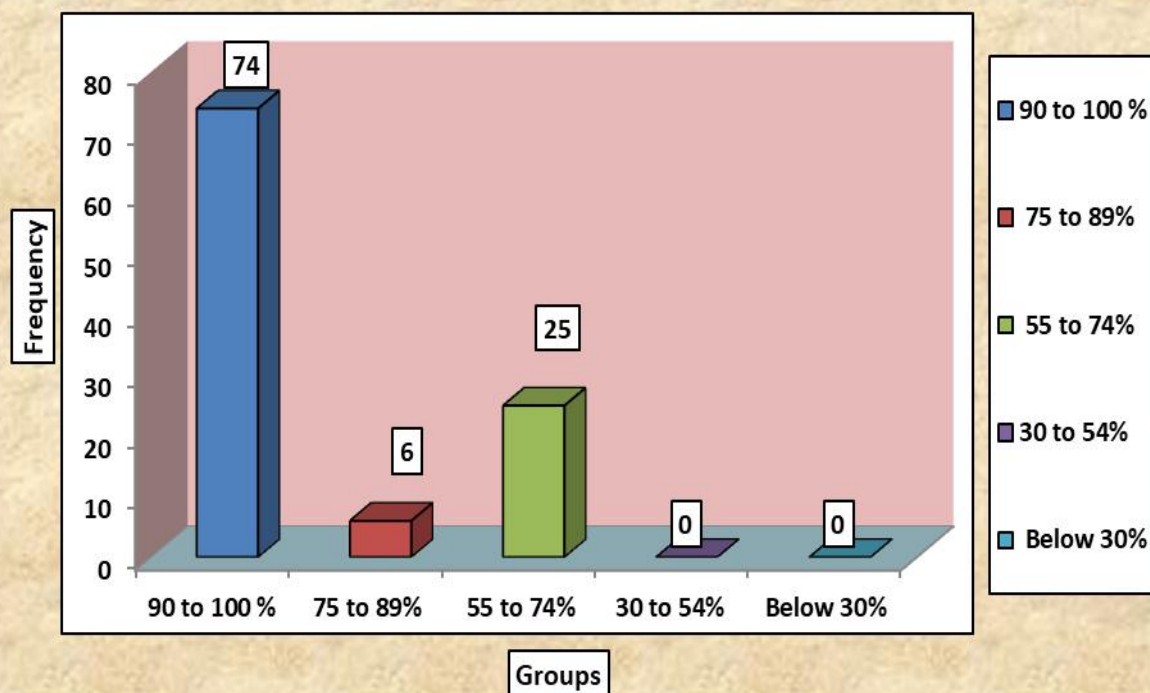


Que No.	Question	Groups	Frequency	Percentage
3	To What extent Clinical and Practical facilities related to your Class have been made available to you?	90 to 100 %	54	51.43
		75 to 89%	32	30.48
		55 to 74%	12	11.43
		30 to 54%	7	6.67
		Below 30%	0	0.00



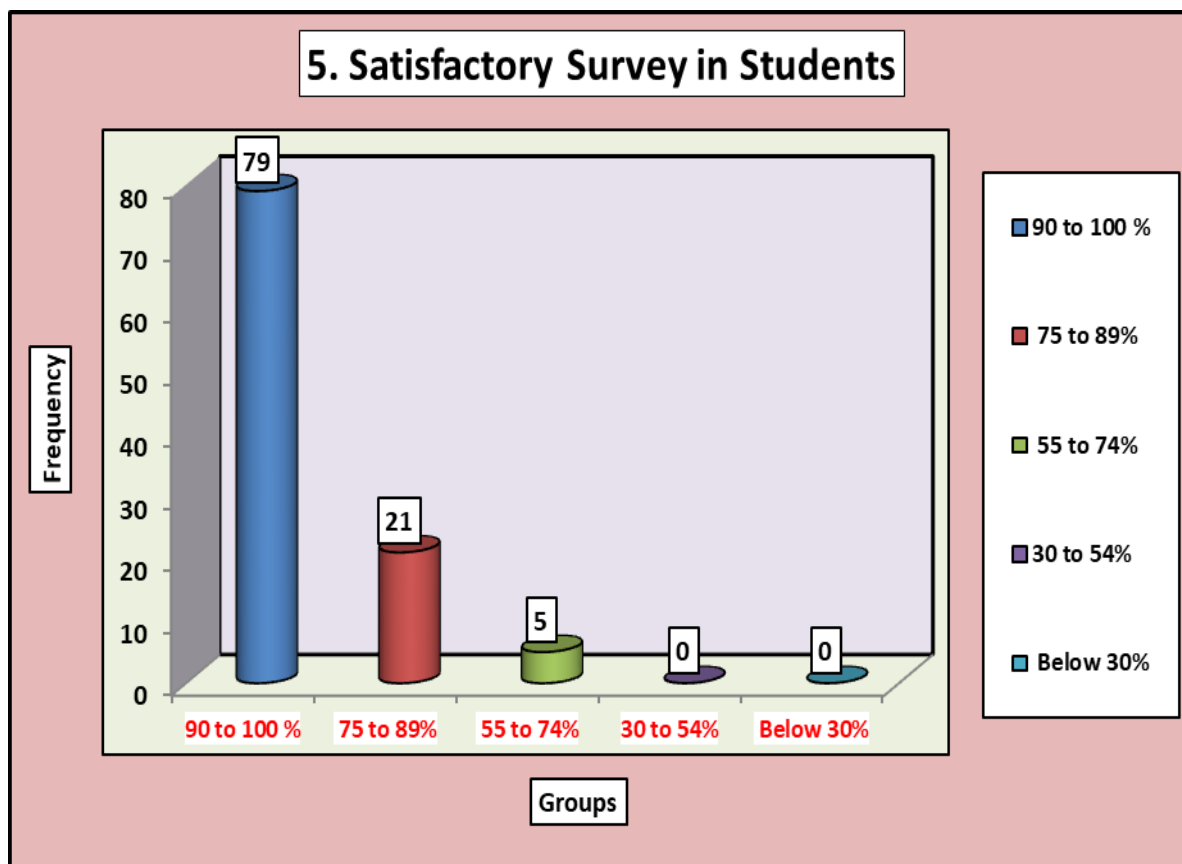


Que No.	Question	Groups	Frequency	Percentage
4	What extent of training you are provided in the Skill and Practical Labs, Clinical Ward Rounds and Practical exercises?	90 to 100 %	74	70.48
		75 to 89%	6	5.71
		55 to 74%	25	23.81
		30 to 54%	0	0.00
		Below 30%	0	0.00

4. Satisfactory Survey in Students

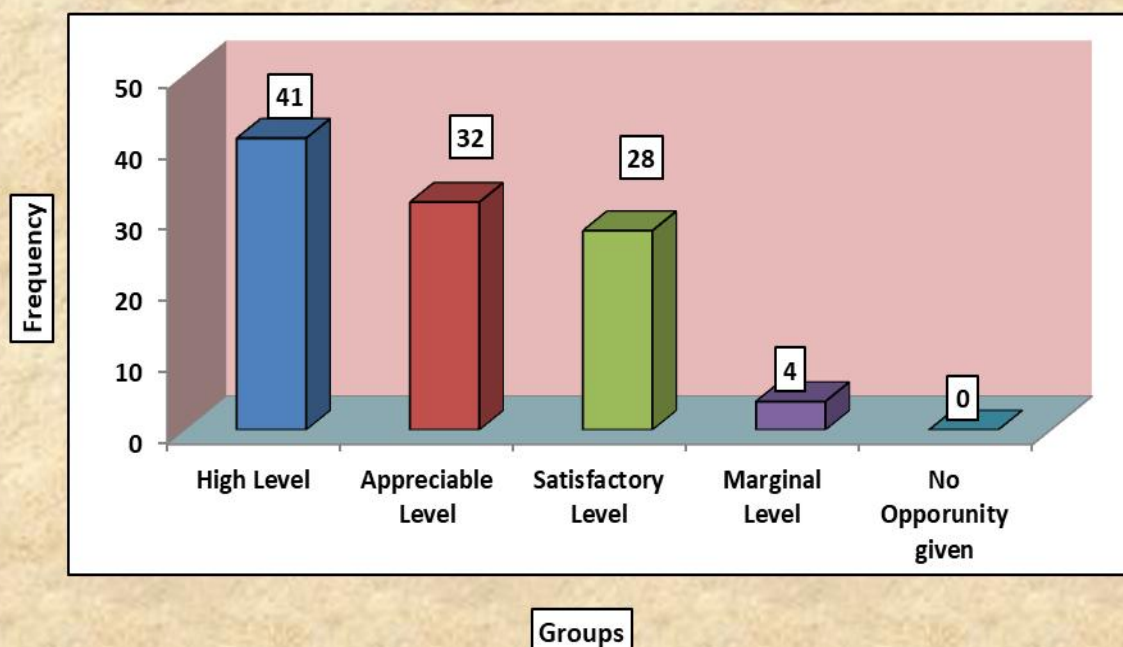


Que No.	Question	Groups	Frequency	Percentage
5	What percentage of teachers use ICT enabled methods like Multimedia (Audio-Video), Web Based materials and e-resources while teaching?	90 to 100 %	79	75.24
		75 to 89%	21	20.00
		55 to 74%	5	4.76
		30 to 54%	0	0.00
		Below 30%	0	0.00



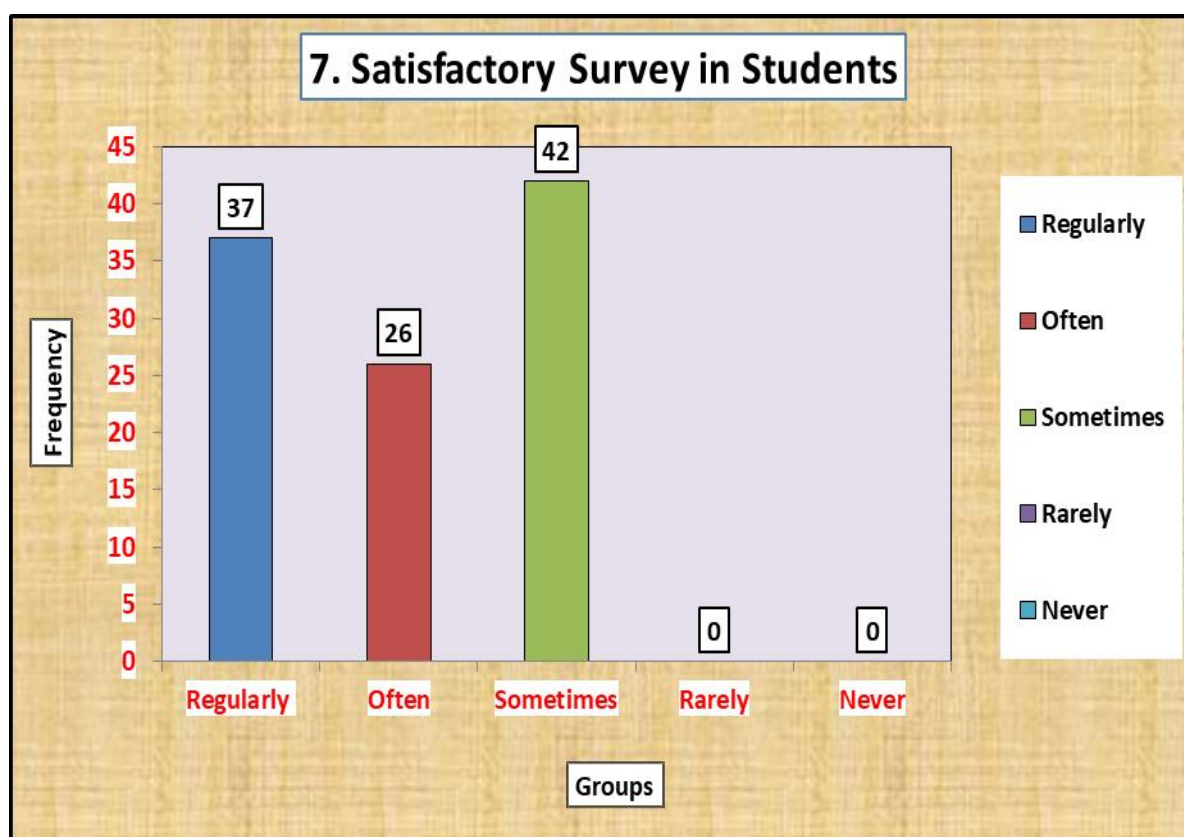


Que No.	Question	Groups	Frequency	Percentage
6	To What extent the academic environment and class room teaching has improved your creative and analytical skills	High Level	41	39.05
		Appreciable Level	32	30.48
		Satisfactory Level	28	26.67
		Marginal Level	4	3.81
		No Opporunity given	0	0.00

6. Satisfactory Survey in Students

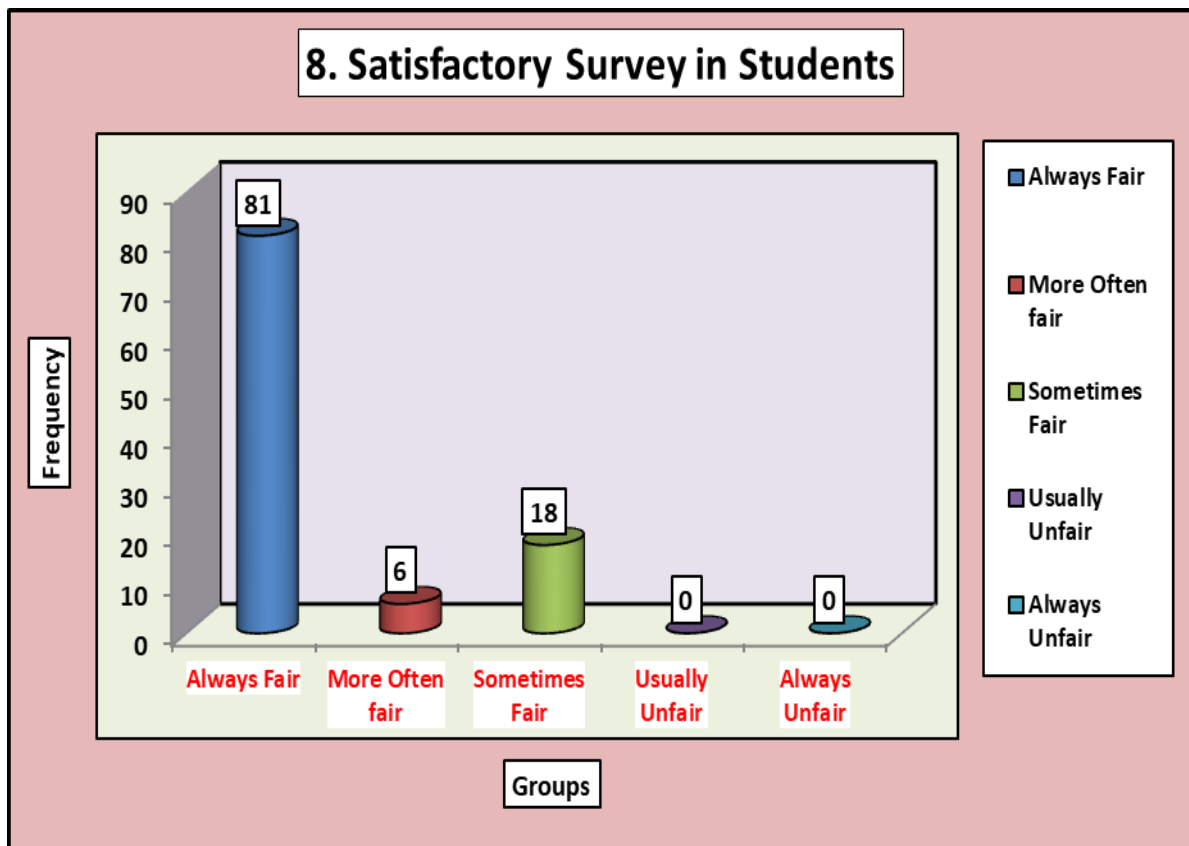


Que No.	Question	Groups	Frequency	Percentage
7	How frequently your performance in academic assignments are discussed and reviewed with you by your teachers?	Regularly	37	35.24
		Often	26	24.76
		Sometimes	42	40.00
		Rarely	0	0.00
		Never	0	0.00



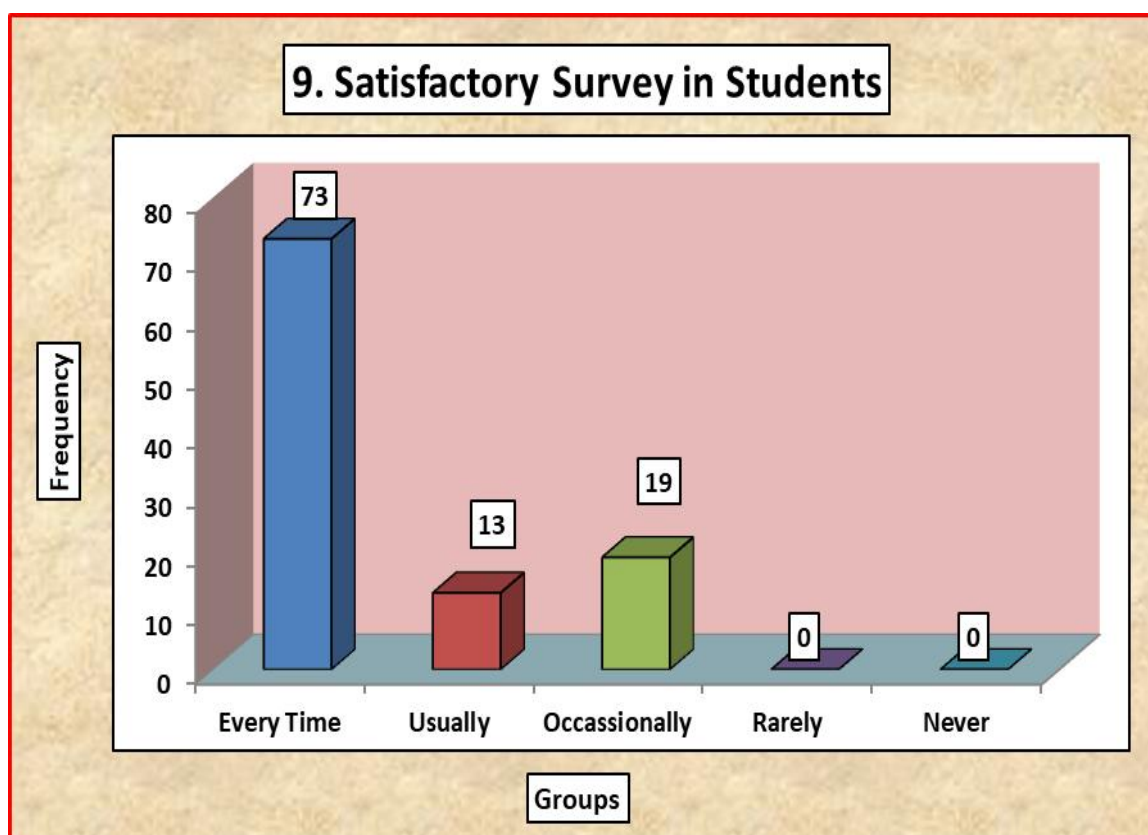


Que No.	Question	Groups	Frequency	Percentage
8	What is your opinion about the fairness of the Internal Assessment Exams and evaluation process by the teachers?	Always Fair	81	77.14
		More Often fair	6	5.71
		Sometimes Fair	18	17.14
		Usually Unfair	0	0.00
		Always Unfair	0	0.00





Que No.	Question	Groups	Frequency	Percentage
9	Do your teachers help you identify your strengths and weaknesses and help you develop or overcome them?	Every Time	73	69.52
		Usually	13	12.38
		Occassionally	19	18.10
		Rarely	0	0.00
		Never	0	0.00



GODAVARI FOUNDATION'S

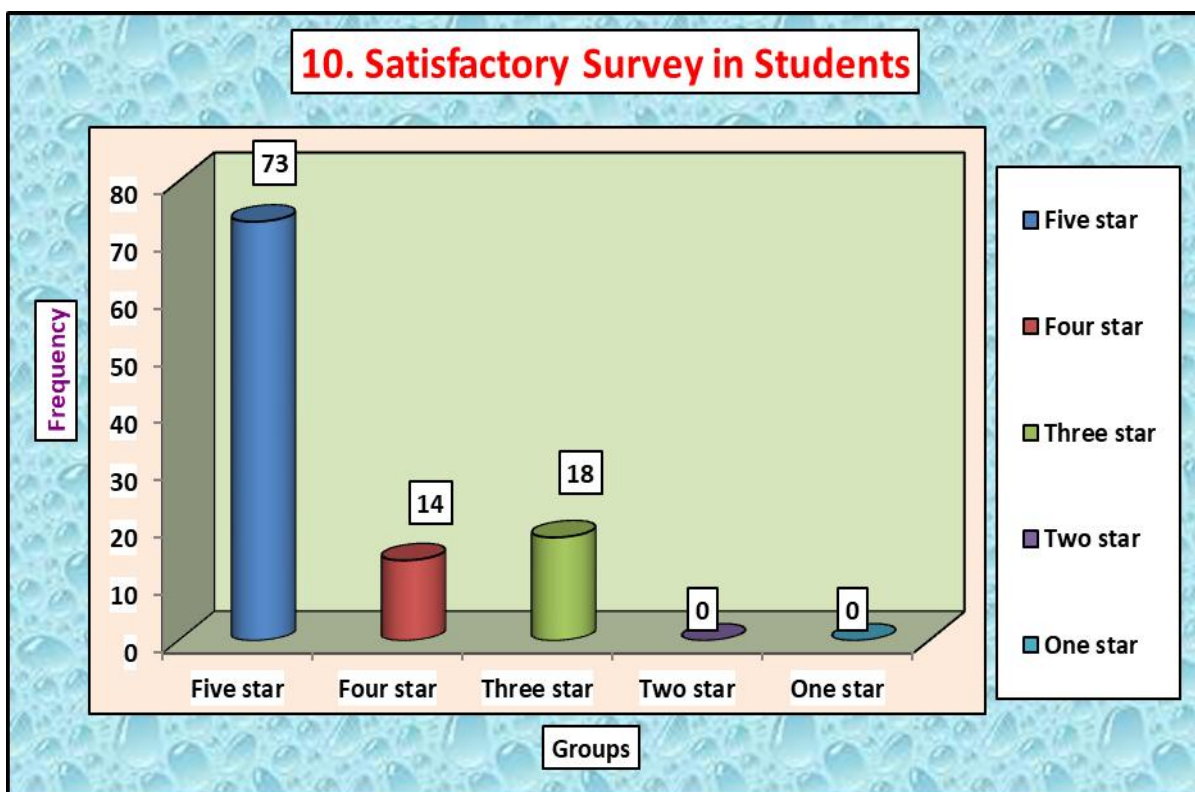
DR. ULHAS PATIL MEDICAL COLLEGE & HOSPITAL

Recognized by National Medical Commission, Approved by Central Govt. of India, New Delhi,
Letter no. MCI-34(41)/2012-med./158127, dated 05/02/2013
Affiliated to Maharashtra University of Health Sciences, Nashik [College Code-1306]

Jalgaon-Bhusawal Road, Jalgaon Kh, Tal. & Dist. Jalgaon 425309 Tel. No.(0257)2366657, 2366678
Email ID : dupmcj@yahoo.in, dupmcj@gmail.com Website : www.dupmc.ac.in

NAAC ACCREDITED

Que No.	Question	Groups	Frequency	Percentage
10	How would you rate the Quality of Teaching, Learning and Evaluation in our institute in terms of Star Rating?	Five star	73	69.52
		Four star	14	13.33
		Three star	18	17.14
		Two star	0	0.00
		One star	0	0.00



[Signature]
Dean,
Dr. Ulhas Patil Medical College
& Hospital, Jalgaon Kh.